

# Annual Report 2016 - 2017

Enriching the Lives of Impoverished Children in Eastern Tibet.



[www.Education At Elevation.org](http://www.EducationAtElevation.org)

A federal 501 c (3) non-profit organization

## *Letter from our President*

Hello! It has been 10 years since I joined some passionate friends who started Education at Elevation. I am always happy to be a small part of keeping this organization running. We had built a school at 14,000 feet in nomad country in Tibet, providing education for children in addition to food and shelter. It has been such a joy to see the changes in children's faces after their enrollment in the school. They smile a lot, look generally happier, and more peaceful and confident. Fifty nine students have graduated so far with basic reading, writing and arithmetic. Some of the graduates moved to a city for a new job or to continue their education - which they had never thought about before going to school.

Keeping girls in school seems to be very challenging due to cultural expectations around gender. However, we happily continue our support in providing scholarships to two female college students every year through the Tibetan Village Project.

We had three fund raising efforts this past year: a booth at the Bellevue Festival of the Arts in summer, a winter holiday cookie drive, and our Tibetan meditation day in May. The meditation event was very successful, and thus we are excited to offer the same event with new instructors and guest speakers in May 2018.

This year we are sponsoring new construction of a bigger school next to our original school. Our vision now includes seniors in the community, a new school for children, and turning the current school building into housing for seniors. There will be a pathway between those buildings, so elders and children can go back and forth. In this way, they can help each other, and have a place to gather, study, eat and sleep.

All this has been possible because of your continuous support. Your contributions go to basic needs such as food, clothes, and teacher salaries. These resources you provide also brought special projects to fruition, including construction of the school and a much needed water system. You have made it possible for these children to dream and hope for new opportunities. Thank you for believing in and supporting our students for 10 years!

Warmly,

*Sean Caras,*

President

Education At Elevation (E@E)

## *School Program*

Enrollment in the school is similar to last year: 32 boys are studying reading, writing and math. They learn the Tibetan language as well as Mandarin (when there is a visiting Chinese teacher at the school). There are currently two



resident Tibetan teachers. Students also learn basic health hygiene and are encouraged to wash their hands frequently and brush their teeth. E@E funds were used this year to hire a chef to cook meals for students and teachers. In past years students prepared basic meals for everyone. Now they are free to study and play (they are kids after all!). Funds were used to supply the chef with barley and wheat flour, rice, vegetables, meat and dried noodles to turn into nutritious meals for the growing students. More fresh food will be available for the students because the chef can now shop at the closest market (2 hours away).

E@E also provided warm clothing (coats, shoes and hats), toiletries, a stove and salaries for the chef and two teachers. No girls are enrolled in the school at this time. Families are more likely to send boys away to school because girls are often needed at home to assist with care of siblings and/or family livestock. The E@E Board wants to enroll more girls and young women in the school and we continue to fund college tuition for young women.



## The Classroom

- The school has only one classroom. Kids of all ages study in a single room.
- Students read aloud in the classes. Tibetan textbooks are often long and narrow, printed in landscape format. Students flip up a page to turn to the next page.
- The stove is in the center of the classroom where it is used for heat, for boiling water, and for cooking.



### Celebration Time!

Sonam Rinpoche made a visit to the school in summer 2017 to review progress and meet with the students and teachers. We enjoy sharing his photos of the students and school with you.

Right: Class celebration party during Rinpoche's visit. Plenty of fruit and big smiles!



## School Construction, phase 2



In Summer 2017 construction began on a new two story school building next to the existing school. The building will have more rooms for students, teachers and visitors. A few rooms will have attached bathrooms. The school has faced teacher shortages for many years. It is Rinpoche's goal to improve the living conditions in this remote, high altitude area hoping to attract teachers to come teach and stay. Rinpoche made a second visit to the school in Fall 2017 to check on the construction progress. This project is mostly sponsored by donors and Rinpoche's students from Asia. E@E will sponsor a portion of the classroom construction.

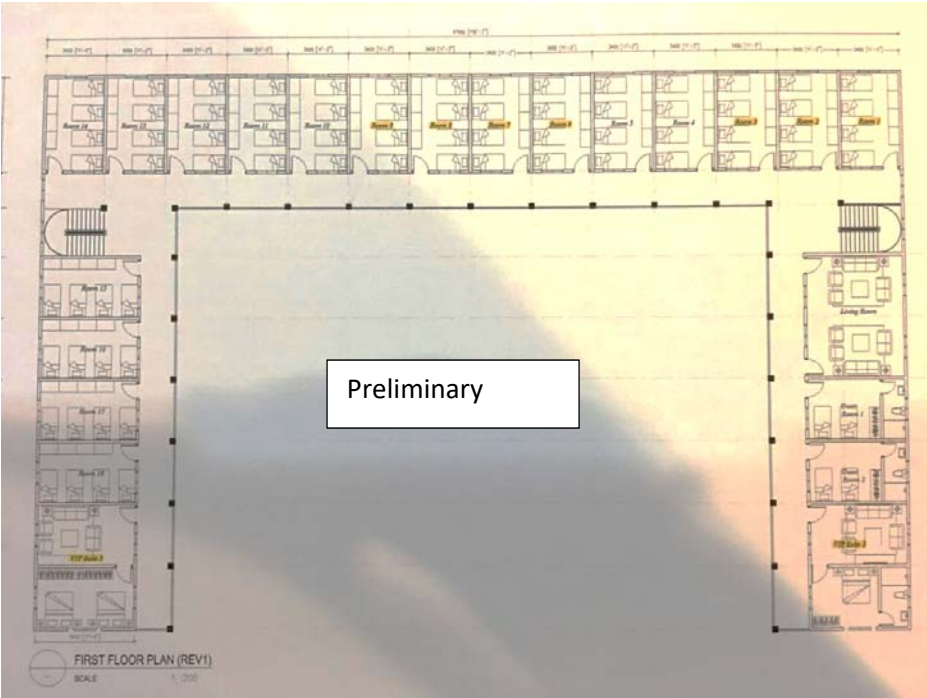
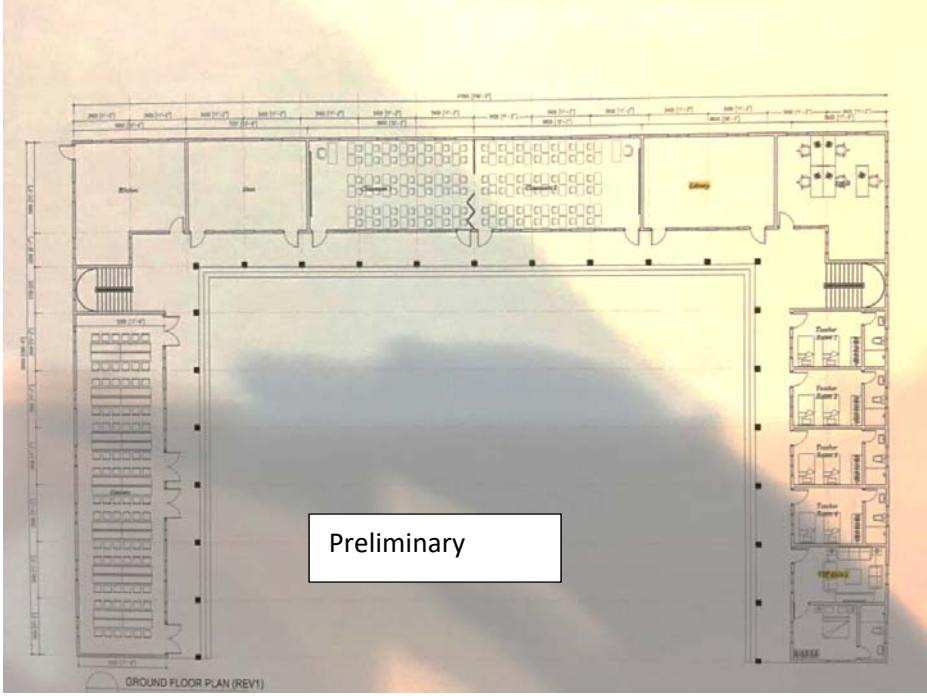
Left: Architect's images of the new school.



0

Construction photos  
taken in Summer and  
Fall 2017







## *Sponsoring Girls to Attend College*

Each year E@E sponsors two young Tibetan women so they can attend college.



**Yangchen Paldon** is in her third year of our sponsorship at Qinghai University for Nationalities in Xining with a major in Chinese Language. She especially enjoys her courses in Tibetan, Chinese, Physics and Chemistry and likes ping pong and jogging. She hopes to become a teacher.

Her father, a tailor, and four siblings live in Yushu, 300 kilometers from the University. Her mother passed away due to illness.

“Education has changed my destiny. It provides an opportunity to go out of the village and farewell to physical labor. It assisted me to find who I really am while gaining so much more in life.

In today’s society, when both technology and communication are so advanced, people are having lack of mutual trust and facing a moral crisis. To treat each other with honesty to change this social habit could only be done through compassion, so I think the compassion is vital. In life, shall always have tolerance, compromise, unselfishness and put ourselves into others’ shoes when facing a problem and hold gratitude toward others are the ways I show my compassion.

I try my best to help people who are in need such as I assist nomads at hospitals, help them with translation, let them stay at my home and take good care of them.

Thank you very much for your financial support. What you offered me was not only money but also provided me with motivation to move forward and a hope for the future.”

## Machig Kyid

In 2016, E@E began sponsoring Machig Kyid who is studying Tibetan medicine at Gansu Medical College. Machig is 25 years old and grew up in a farming family in Xiahe County, Gansu. Her father passed away when she was very young, so her mother supported the family of 4 doing various jobs in shops, restaurants and construction. The family views Machig's education as very important and Machig aspires to becoming a "good and very professional doctor" who can help people lead healthy lives.

She tells us "I am a student from a poor family, since I attended college there are so many responsibilities I am carrying with me to alleviate the poverty our family and community are facing. Many years before I felt very worried. I am worrying can I do my studies well? Can I overcome all the difficulties and keep going?"

But things proved that all my doubts are useless. Actually I made all of it like the other students did and even I do better I think.

I want to say thank you very much for everything you have done for me."



## Local Activities



**E@E booth** sponsored by Bellevue Festival of the Arts, July 2017. – Thank You!





# Tibetan Meditation Mothers Day Weekend

Saturday, May 13 10am-4pm

## PEACE - LOVE - YOGA

Visit our website for early bird class discounts  
Proceeds benefit impoverished children in Tibet

Wellness • Flowers  
Fitness • Food • Art

Brightwater Center  
22505 WA-9  
Woodinville, WA 98072  
[www.EducationAtElevation.org](http://www.EducationAtElevation.org)



**Thank you** Khenpo Jampa Rinpoche, Tibetan Culture and Language School (Seattle), event sponsors, volunteer speakers, teachers, and volunteers for a very successful event. The funds raised from this event goes to sponsoring a portion of a classroom at the new school.

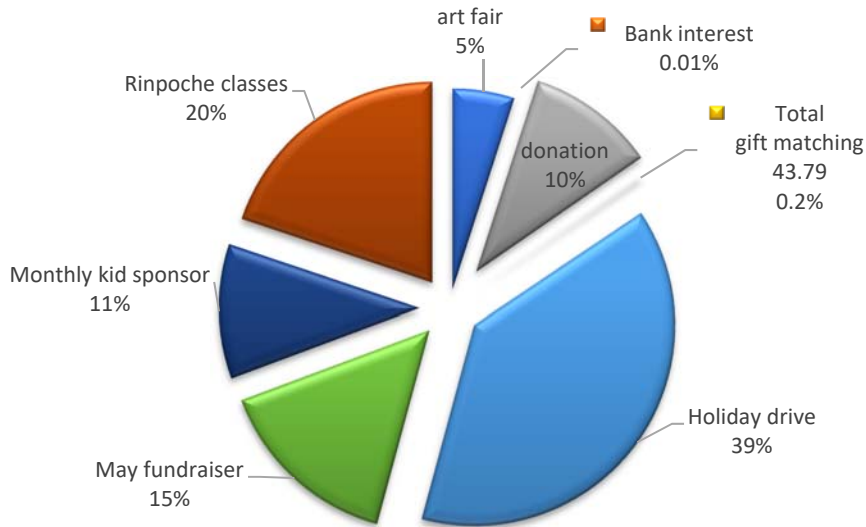
**THANK YOU!**

We look forward to seeing you again next year!



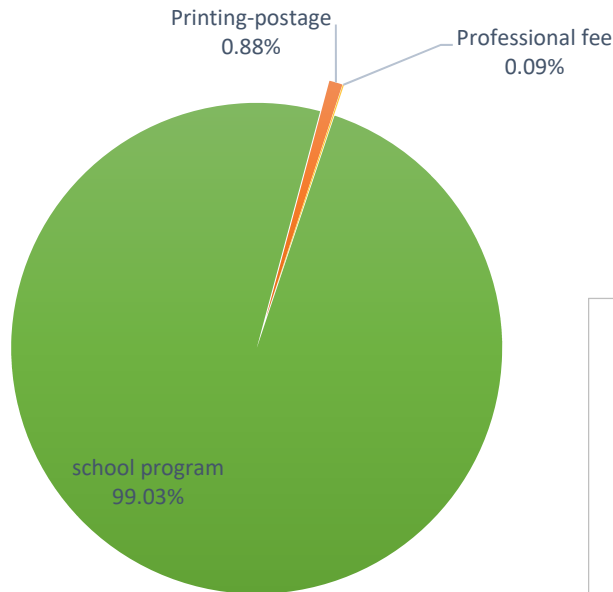
# Financial Report (July 2016 – June 2017)

## Revenue \$19,291



\$5k goes into reserve fund to sponsor classroom at new building.

## Expenses \* \$11,310



E@E is completely run by volunteers. This year's overhead is ONLY 1%.  
**99 cents of every dollar benefits the students.**

## Consolidated Statement

<u>Consolidated Statement of Activities</u>			
July 1, 2016 - June 30, 2017			
		<b>2016-2017</b>	2015-2016
<b>Revenue and support</b>		\$	\$
	May fundraiser	2915	750
	General donations	4,089	5,040
	Fair (Bellevue Festival of Arts)	962	696
	Holiday drive	7,449	7,135
	Bank interest	2	3
	Gift matching	44	160
	Rinpoche classes	3,830	
		<b>19291</b>	13784
<b>Expenses</b>			
	Program services - School program	11200	22776
	Program services - Scholarship	Note 1	1825
	Printing/postage	100	302
	Professional fees/License fees	10	10
	Other (Emergency aid for Nepal Earthquake)		315
		<b>11,310</b>	<b>25,228</b>
	Reserve fund (classroom sponsorship)	5000	
<b>Net Assets</b>			
	Beginning	<b>7,388</b>	18,832
	Ending	<b>15,369</b>	7,388

Note 1: Girls' scholarship payment of \$1,800 in July 2017 has just missed the 2016-2017 financial year reporting period. \$1,800 will post on next year's financial report.

## *Board of Directors*

Sean Caras	President
Patti Shelton, MD.	Vice president
Patrick Low	Secretary
Wendy Wong, PE	Treasurer
Anne Curtis	Director
Ann Sutherland	Director
Michele Thomson	Director
Eric Mentele	Director
Yuko Caras	Director